

# COMUNE DI SALERNO

protocollo

# PUA

**Ambito di Riqualificazione Urbana**  
(Quaranta Michele & C. s.r.l.)  
*in via Irno 205*  
(delibera di G.M. n° 191 del 27.06.2014)

Proprietà partecipante: Eredi "Soc. Quaranta Michele & C. s.r.l."

Soggetto Proponente: LUMA s.r.l. (delegato dai Sigg. Quaranta)

Progettisti: Arch. Rocco Fasolino e Arch. Angelo Viscido

data: APRILE 2019

# 15P

Tav. rev.03



PROGETTO

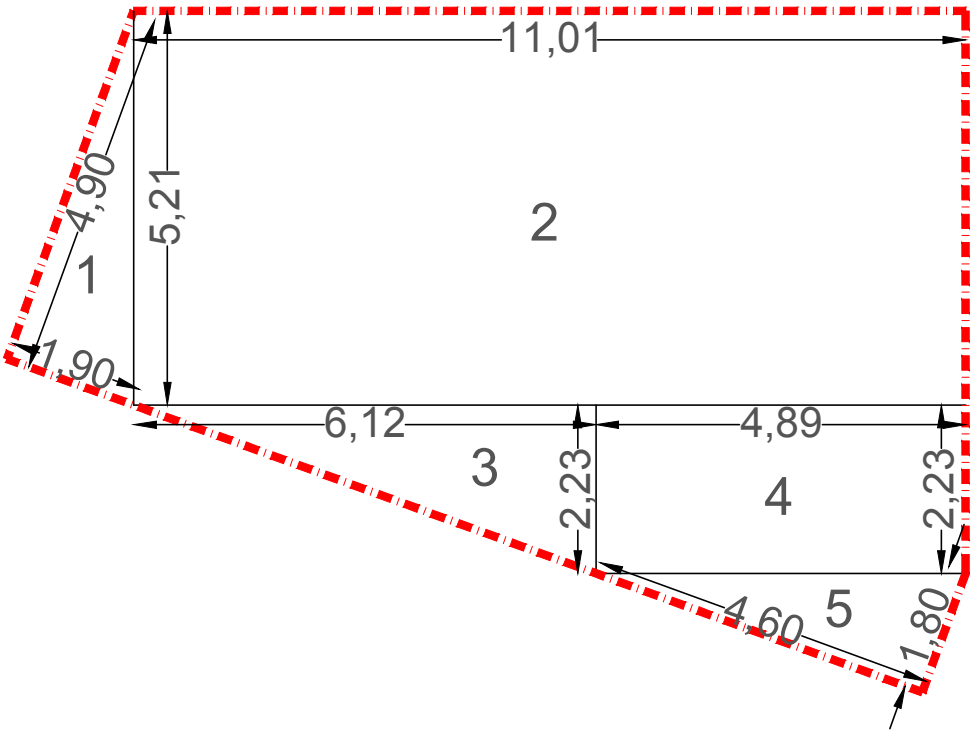
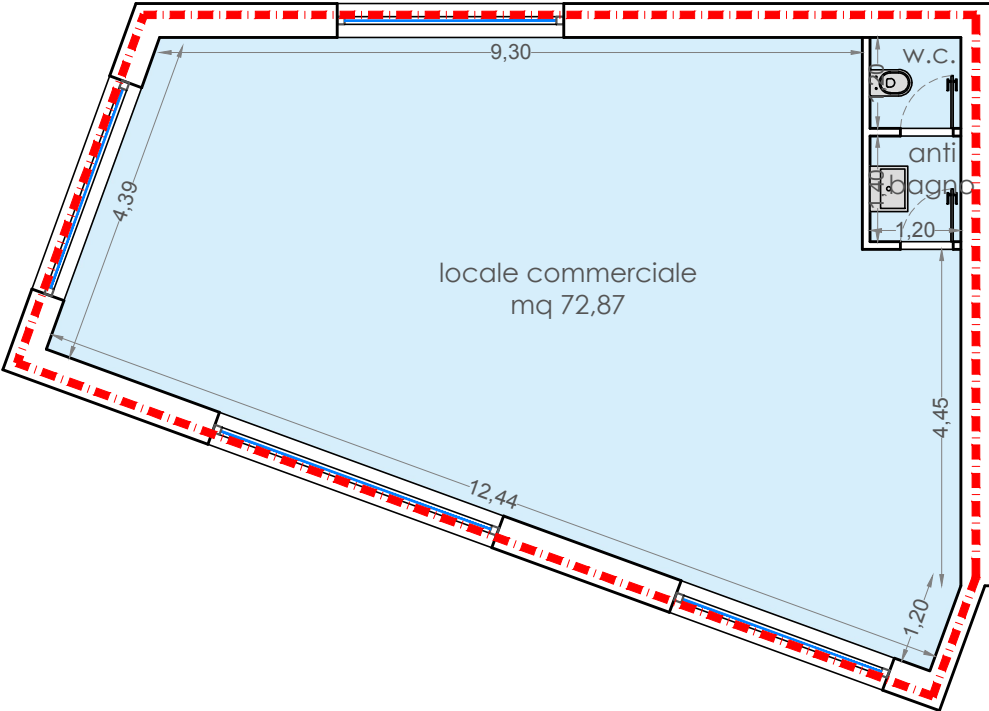
Schede tipologie edilizie

rapp.

1:100

metamorfose  
macchina ... per abitare

TIPOLOGIA 1 N

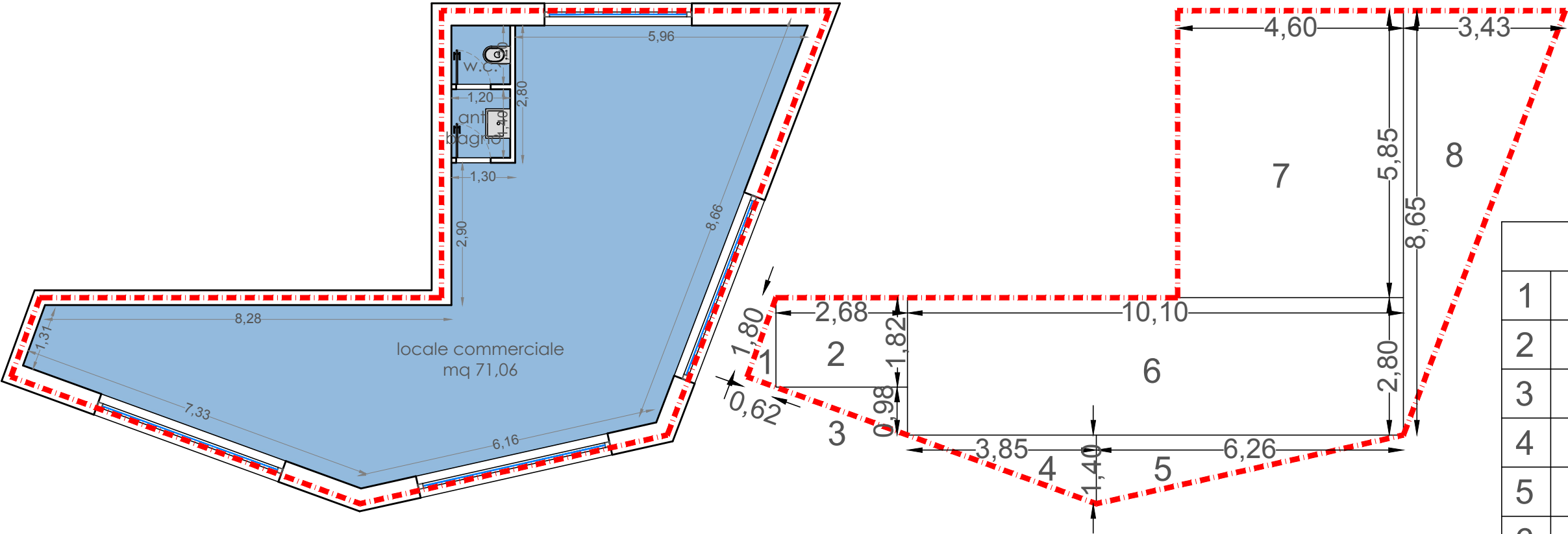


Superficie Utile	
Destinazione	mq
loCALE commerciale	69,75
anti bagno	1,68
w.c.	1,44
TOTALE S.U.	72,87

Superficie Lorda di Solaio	
1	(m 4,90 x m 1,90)/ 2= mq 4,65
2	m 11,01 x m 5,21 = mq 57,36
3	(m 6,12 x m 2,23)/ 2 = mq 6,82
4	m 4,89 x m 2,23 = mq 10,90
5	(m 4,60 x m 1,80)/ 2= mq 4,14
TOTALE S.L.S. mq 83,87	

Volume	
mq 83,87 x m 3,85 = mc 322,90	
TOTALE VOLUME	mc 322,90

TIPOLOGIA 2 N

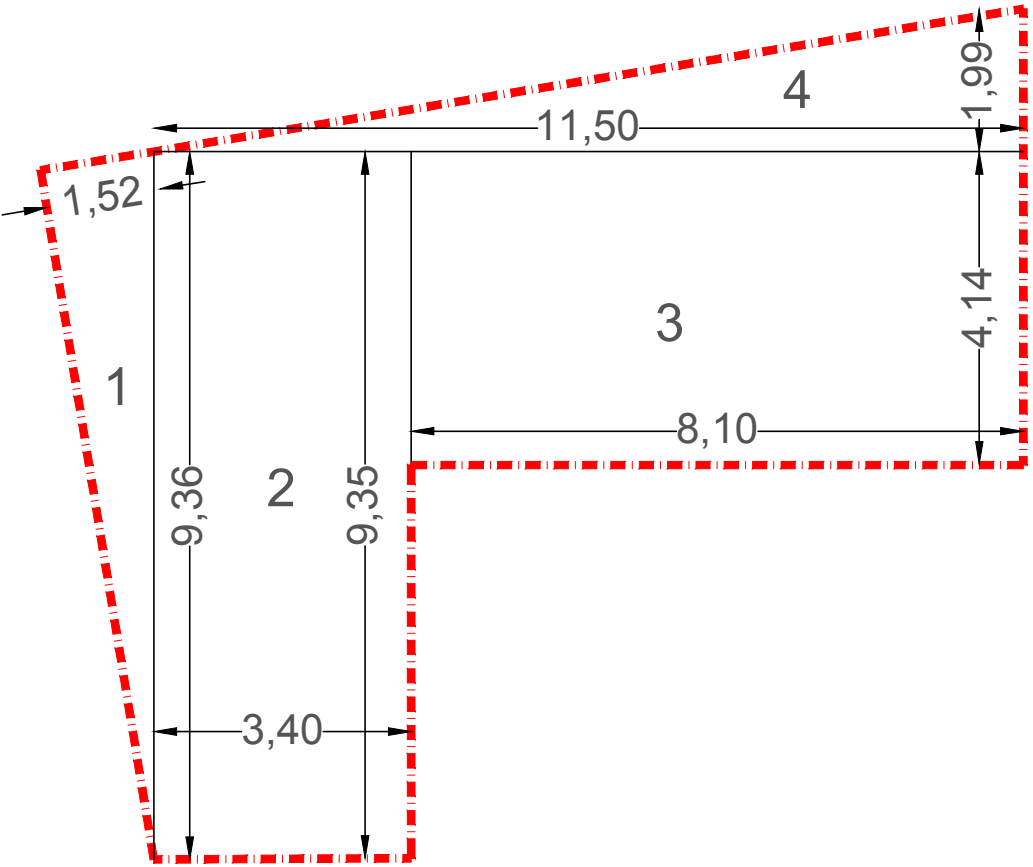
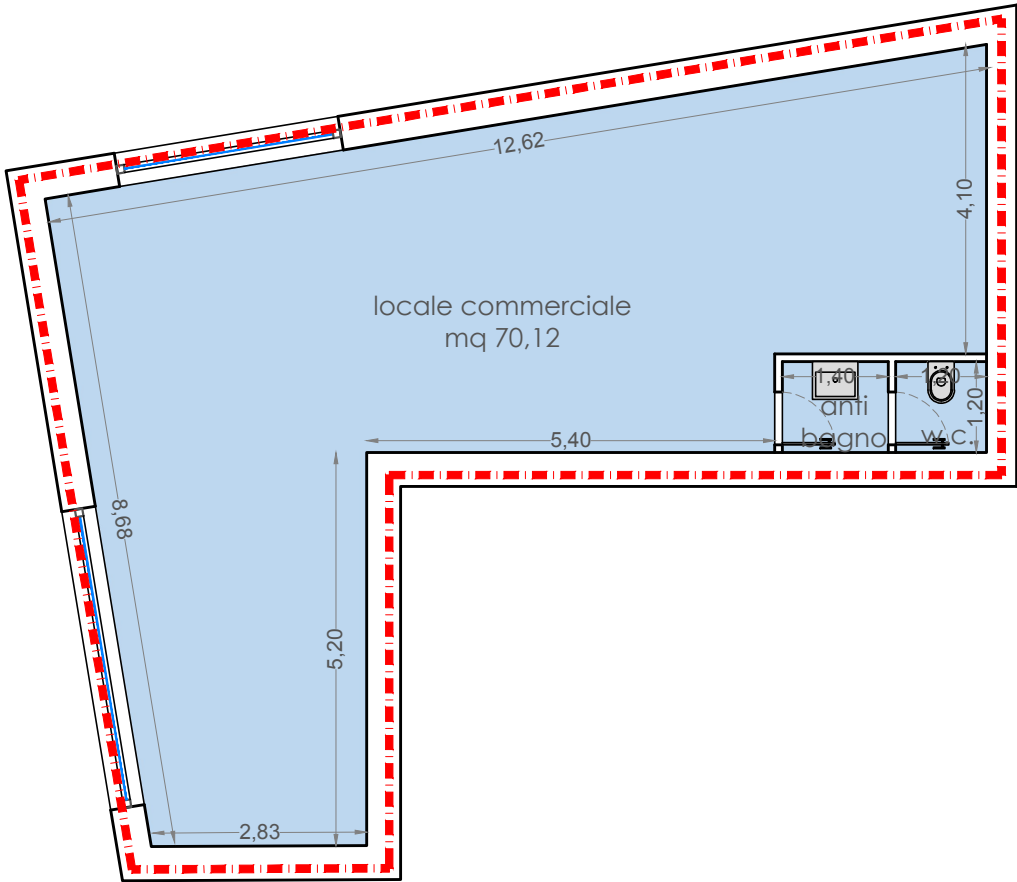


Superficie Utile	
Destinazione	mq
locale commerciale	67,94
anti bagno	1,68
w.c.	1,44
TOTALE S.U.	71,06

Superficie Lorda di Solaio	
1	(m 1,80 x m 0,62)/ 2= mq 0,56
2	m 2,68 x m 1,82 = mq 4,89
3	(m 2,68 x m 0,98)/ 2 = mq 1,32
4	(m 3,85 x m 1,40)/ 2= mq 2,70
5	(m 6,26 x m 1,40)/ 2= mq 4,38
6	m 10,10 x m 2,80= mq 28,28
7	m 4,60 x m 5,85= mq 26,91
8	(m 3,43 x m 8,65)/ 2= mq 14,83
TOTALE S.L.S. mq 83,87	

Volume	
mq 83,87 x m 3,85 = mc 322,90	
TOTALE VOLUME	mc 322,90

TIPOLOGIA 3 N

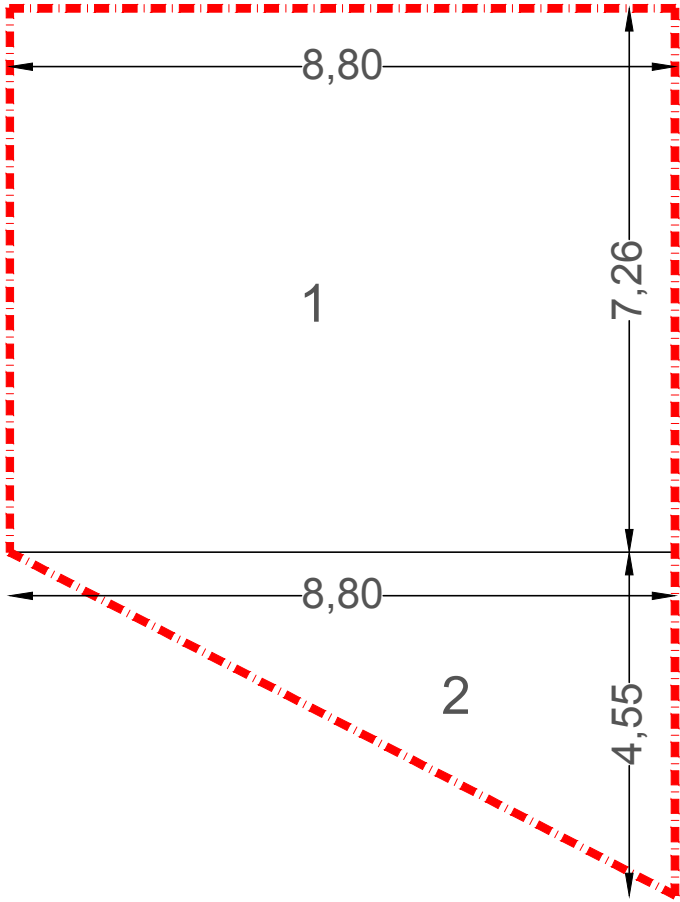
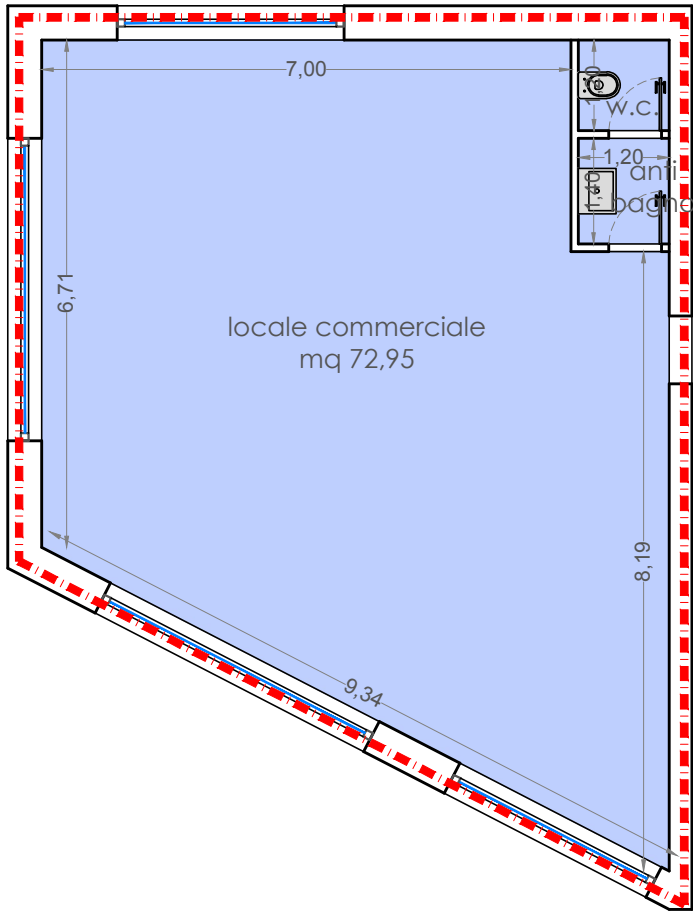


Superficie Utile	
Destinazione	mq
locale commerciale	67,00
anti bagno	1,68
w.c.	1,44
TOTALE S.U.	70,12

Superficie Lorda di Solaio	
1	$(m\ 1,52 \times m\ 9,36) / 2 = mq\ 7,11$
2	$(9,34 + 9,36) \times 3,40 / 2 = mq\ 31,77$
3	$m\ 8,10 \times m\ 4,14 = mq\ 33,52$
4	$(m\ 11,50 \times m\ 1,99) / 2 = mq\ 11,47$
TOTALE S.L.S.	<b>mq 83,87</b>

Volume	
$mq\ 83,87 \times m\ 3,85 = mc\ 322,90$	
TOTALE VOLUME	mc 322,90

TIPOLOGIA 4 N

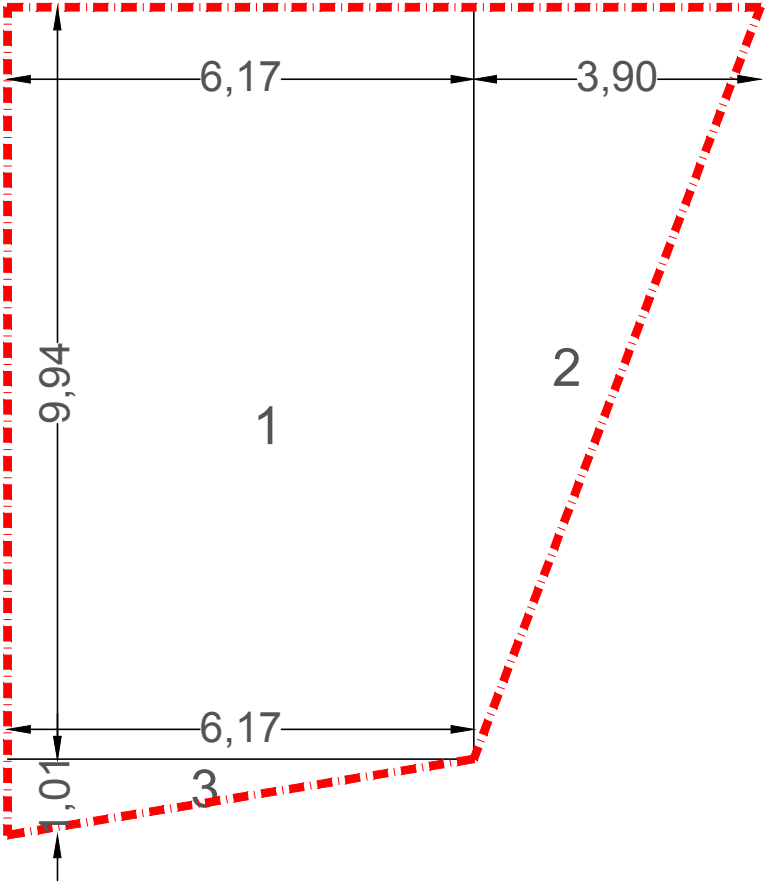
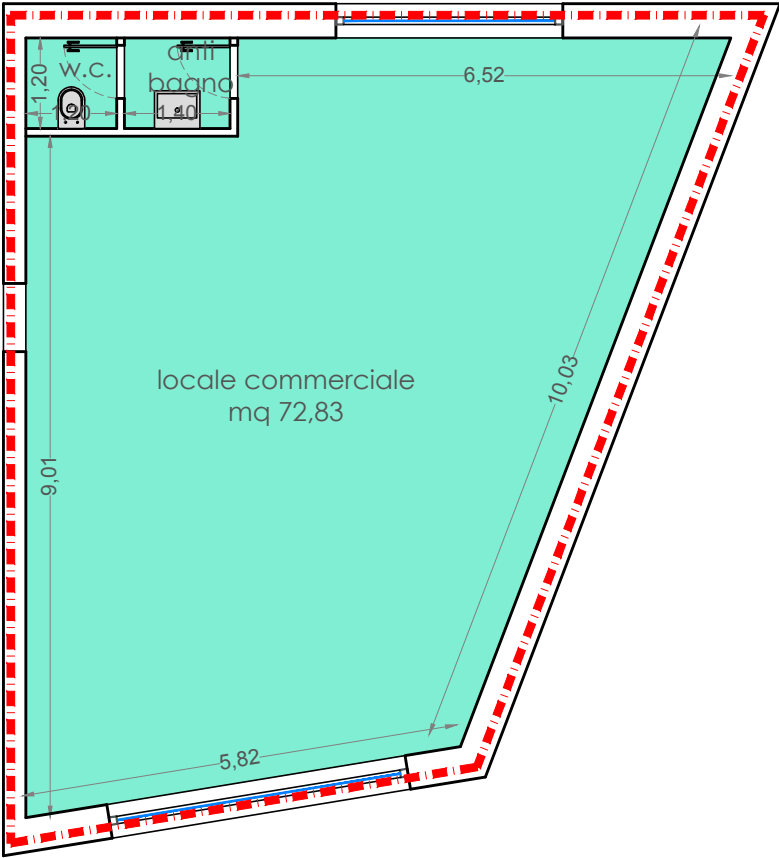


Superficie Utile	
Destinazione	mq
locale commerciale	69,83
anti bagno	1,68
w.c.	1,44
TOTALE S.U.	72,95

Superficie Lorda di Solaio	
1	m 8,80 x m 7,26 = mq 63,86
2	(m 8,80 x m 4,55) / 2 = mq 20,01
TOTALE S.L.S.	mq 83,87

Volume	
mq 83,87 x m 3,85 = mc 322,90	
TOTALE VOLUME	mc 322,90

TIPOLOGIA 5 N

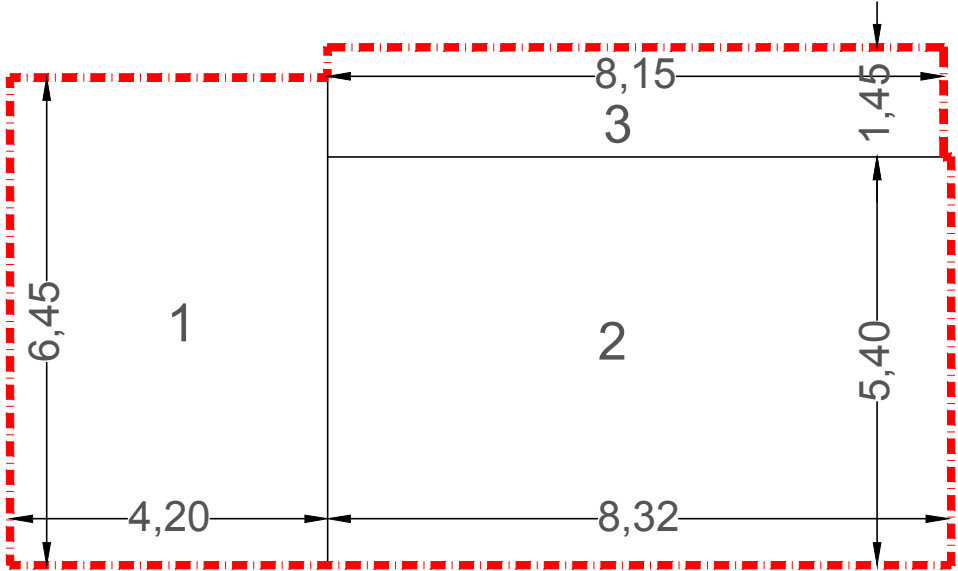
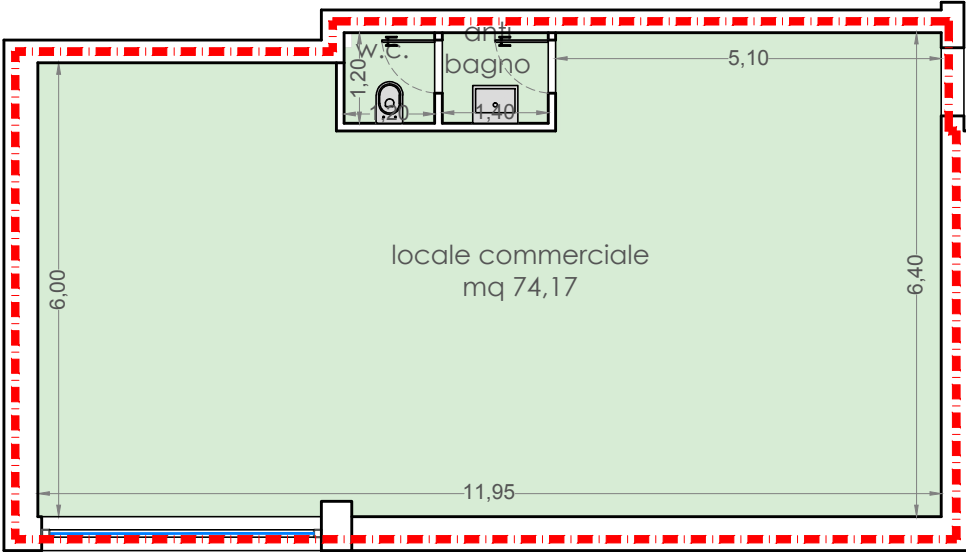


Superficie Utile	
Destinazione	mq
locale commerciale	69,71
anti bagno	1,68
w.c.	1,44
TOTALE S.U.	72,83

Superficie Lorda di Solaio	
1	m 9,94 x m 6,17= mq 61,33
2	(m 9,94 x m 3,90) / 2 = mq 19,42
3	(m 6,17 x m 1,01) / 2 = mq 3,12
TOTALE S.L.S.	<b>mq 83,87</b>

Volume	
mq 83,87 x m 3,85 = mc 322,90	
TOTALE VOLUME	mc 322,90

TIPOLOGIA 6 N

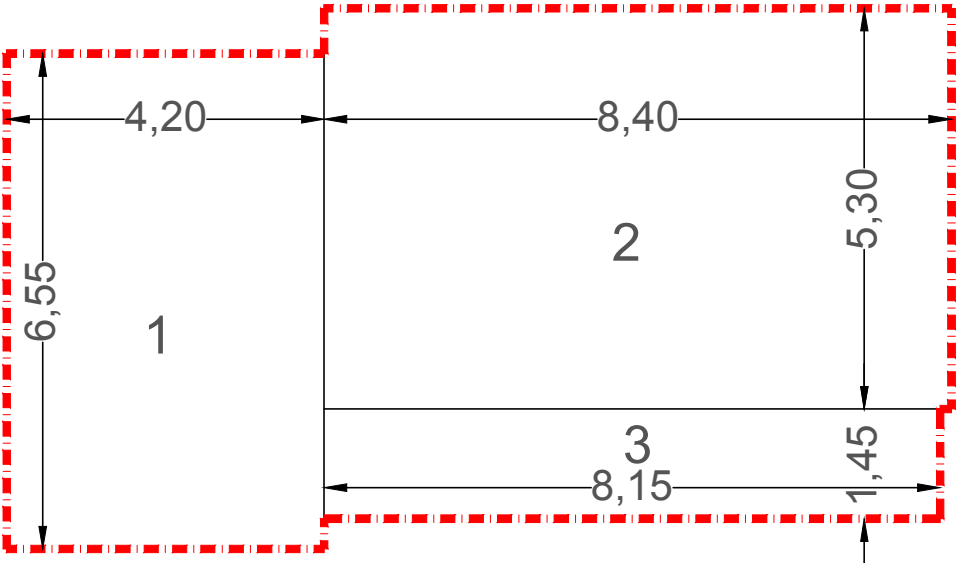
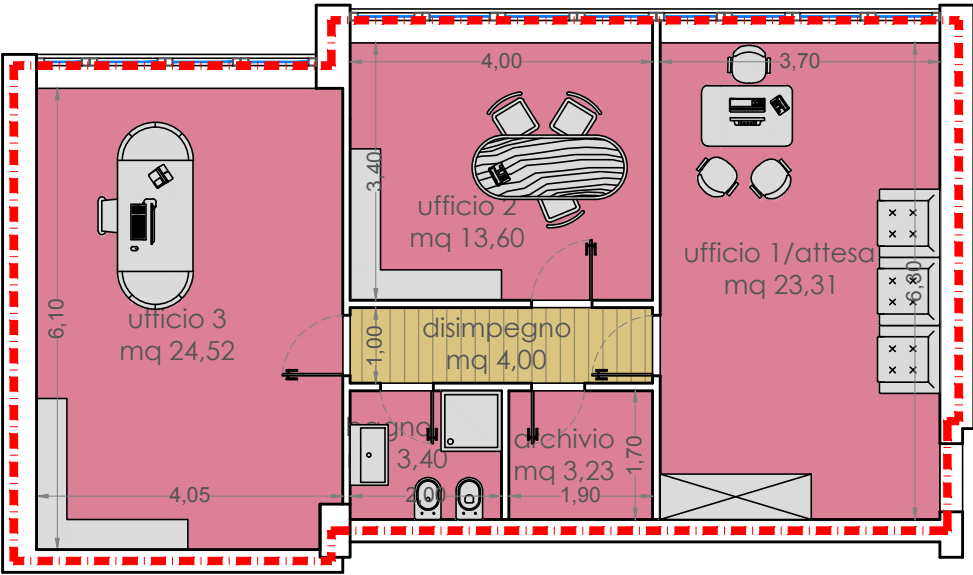


Superficie Utile	
Destinazione	mq
locale commerciale	71,05
anti bagno	1,68
w.c.	1,44
TOTALE S.U.	74,17

Superficie Lorda di Solaio	
1	m 4,20 x m 6,45= mq 27,09
2	m 5,40 x m 8,32 = mq 44,96
3	m 1,45 x m 8,15 = mq 11,82
TOTALE S.L.S. mq 83,87	

Volume	
mq 83,87 x m 3,85 = mc 322,90	
TOTALE VOLUME	mc 322,90

TIPOLOGIA 1 D



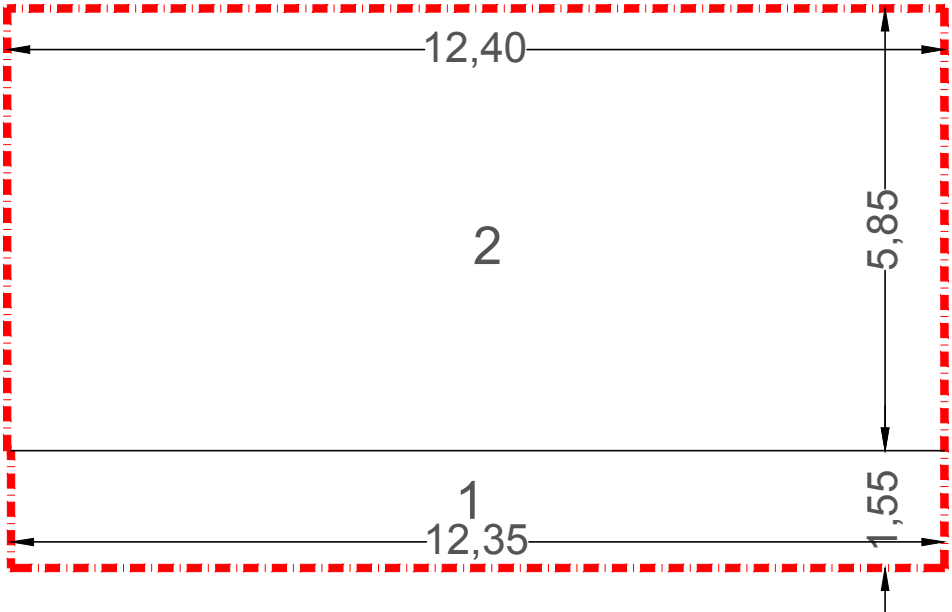
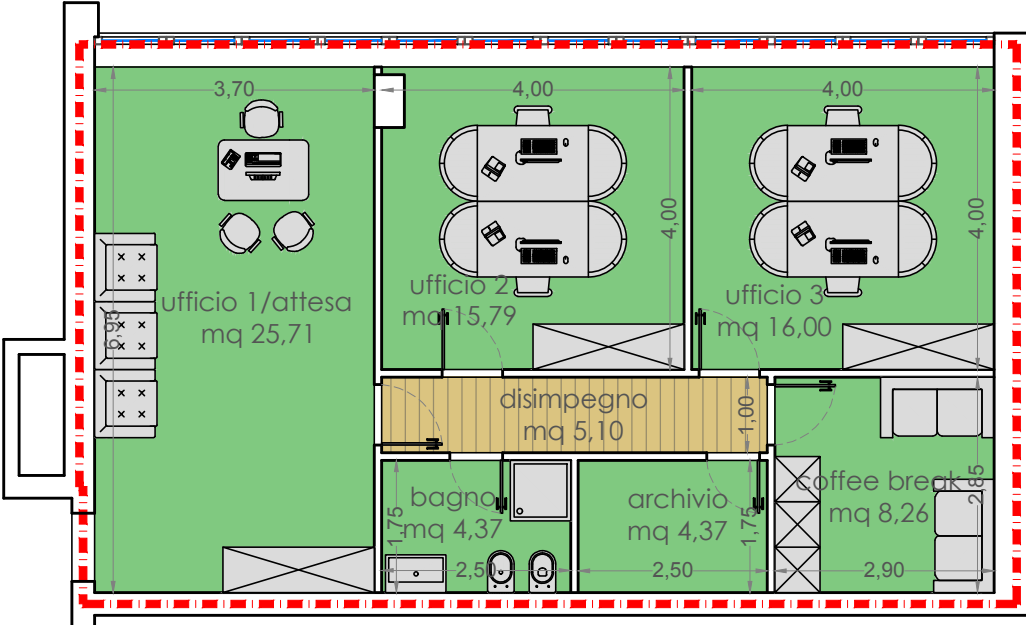
Superficie Utile	
Destinazione	mq
ufficio 1/attesa	23,31
ufficio 2	13,60
ufficio 3	24,52
archivio	3,23
bagno	3,40
disimpegno	4,00
TOTALE S.U.	72,06

Superficie Lorda di Solaio	
1	m 6,55 x m 4,20 = mq 27,50
2	m 8,40 x m 5,30 = mq 44,57
3	m 8,15 x m 1,45 = mq 11,80
TOTALE S.L.S.	mq 83,87

Volume	
mq 83,87 x m 3,85 = mc 322,90	
TOTALE VOLUME	mc 322,90



TIPOLOGIA 2 D

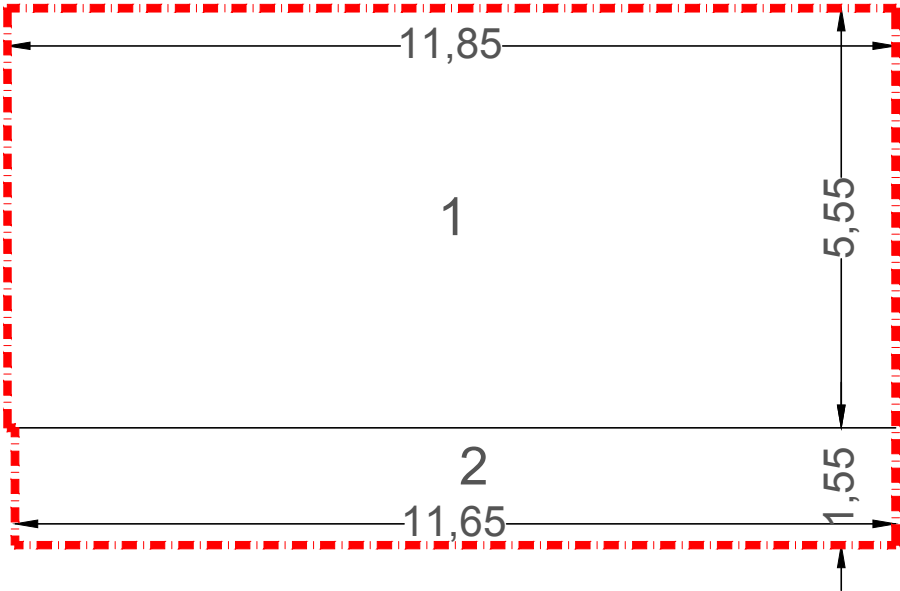
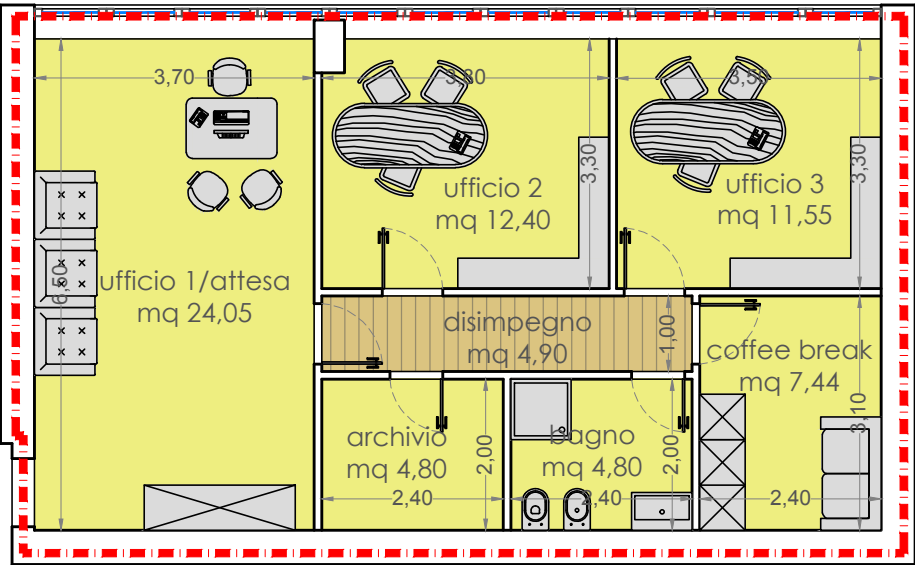


Superficie Utile	
Destinazione	mq
ufficio 1/attesa	25,71
ufficio 2	15,76
ufficio 3	16,00
coffee break	8,26
archivio	4,37
bagno	4,37
disimpegno	5,10
TOTALE S.U.	79,57

Superficie Lorda di Solaio	
1	m 12,40 x m 5,85 = mq 72,54
2	m 12,35 x m 1,55 = mq 19,14
TOTALE S.L.S.	mq 91,68

Volume	
mq 91,68 x m 3,15 = mc 288,79	
TOTALE VOLUME	mc 288,79

TIPOLOGIA 3 D

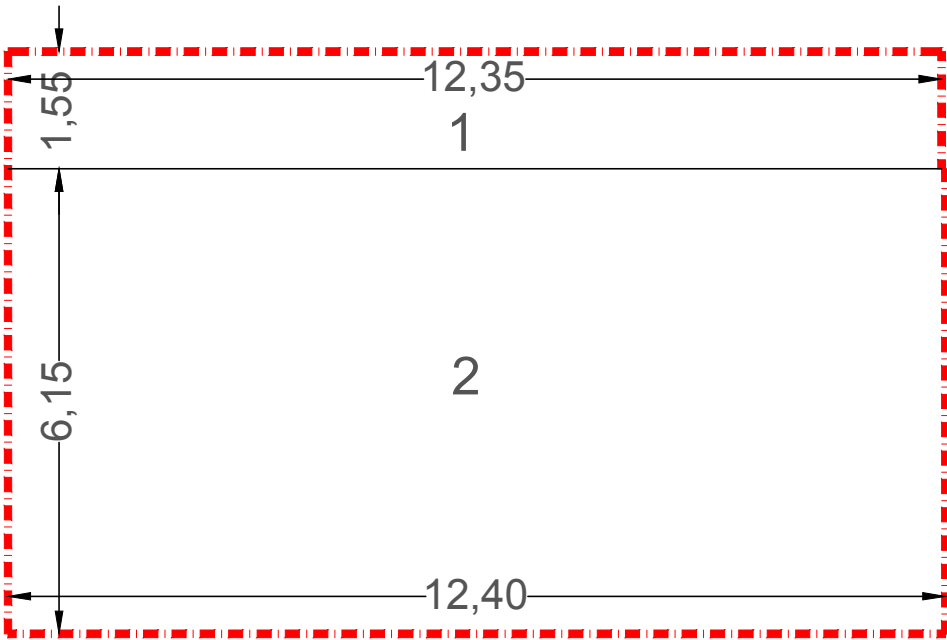
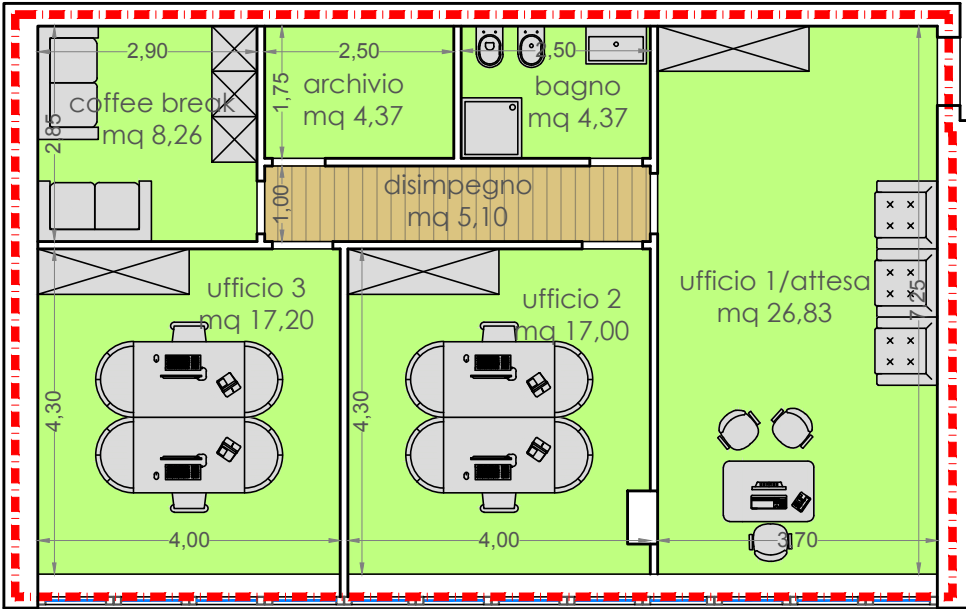


Superficie Utile	
Destinazione	mq
ufficio 1/attesa	24,05
ufficio 2	12,40
ufficio 3	11,55
coffee break	7,44
archivio	4,80
bagno	4,80
disimpegno	4,90
TOTALE S.U.	69,94

Superficie Lorda di Solaio	
1	m 11,85 x m 5,55 = mq 65,81
2	m 11,65 x m 1,55 = mq 18,06
TOTALE S.L.S.	mq 83,87

Volume	
mq 83,87 x m 3,85 = mc 322,90	
TOTALE VOLUME	mc 322,90

TIPOLOGIA 4 D

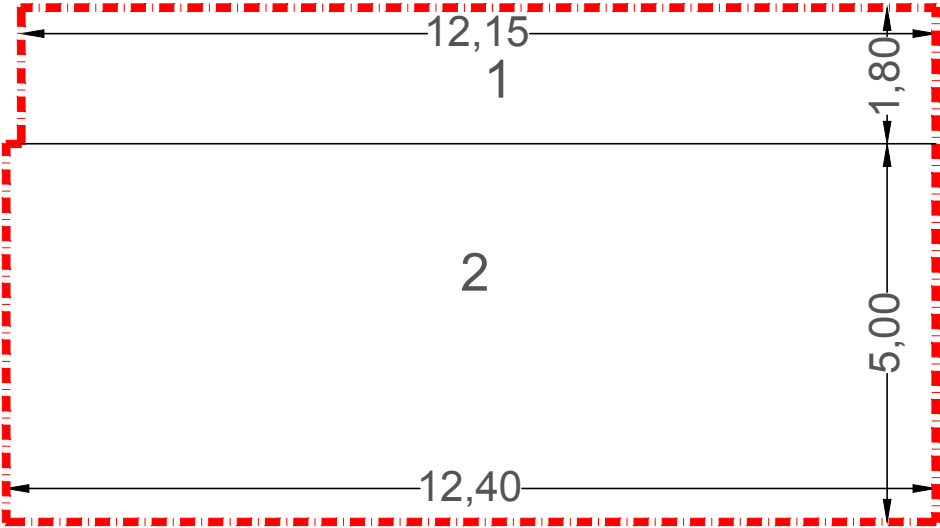
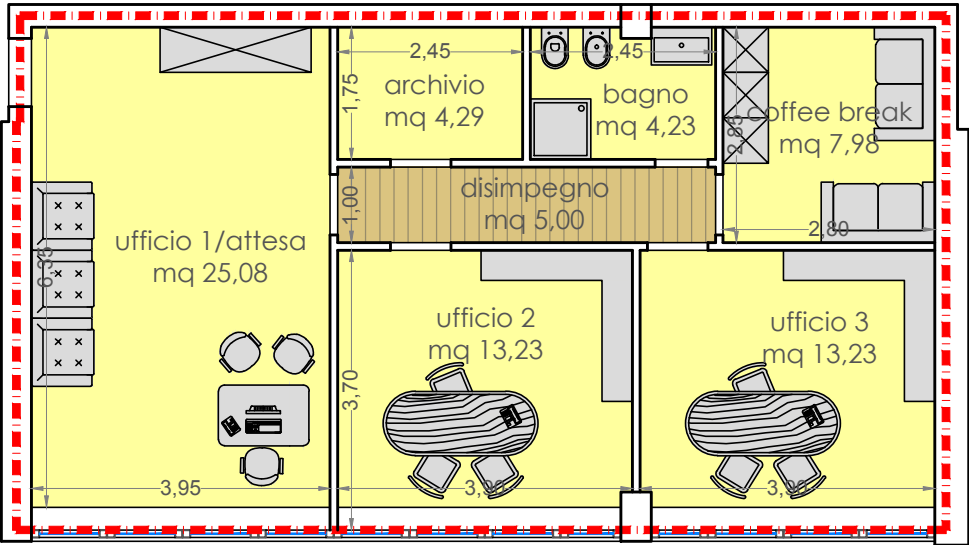


Superficie Utile	
Destinazione	mq
ufficio 1/attesa	26,83
ufficio 2	17,00
ufficio 3	17,20
coffee break	8,26
archivio	4,37
bagno	4,37
disimpegno	5,10
TOTALE S.U.	83,13

Superficie Lorda di Solaio	
1	m 12,35 x m 1,55 = mq 19,14
2	m 12,40 x m 6,15 = mq 76,26
TOTALE S.L.S.	mq 95,40

Volume	
mq 95,40 x m 3,15 = mc 300,51	
TOTALE VOLUME	mc 300,51

TIPOLOGIA 5 D

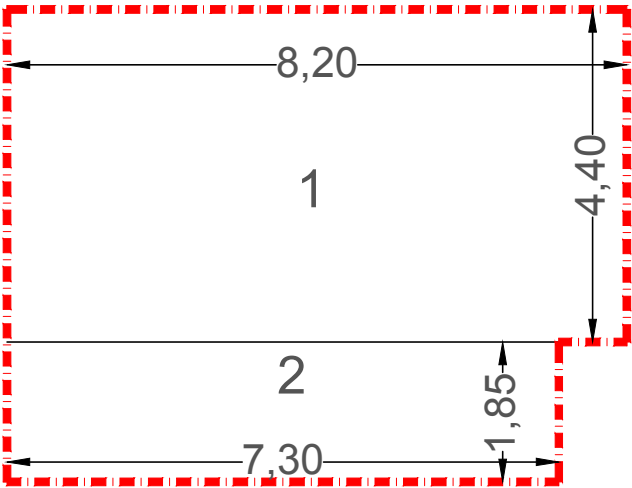
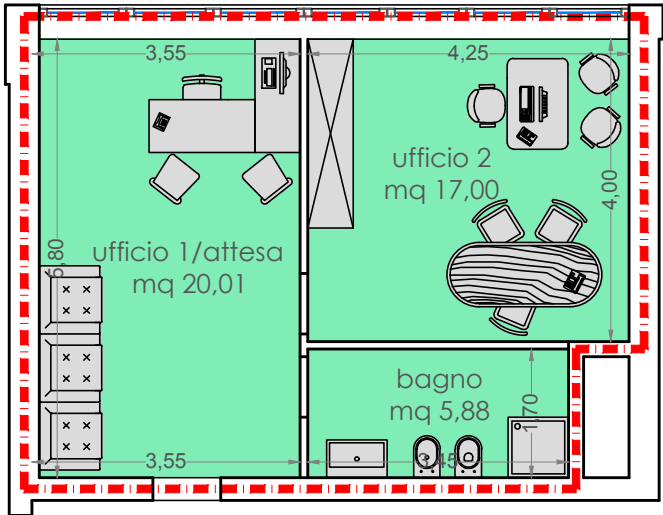


Superficie Utile	
Destinazione	mq
ufficio 1/attesa	25,08
ufficio 2	13,23
ufficio 3	13,23
coffee break	7,98
archivio	4,29
bagno	4,23
disimpegno	5,00
TOTALE S.U.	73,04

Superficie Lorda di Solaio	
1	m 12,15 x m 1,80 = mq 21,87
2	m 12,40 x m 5,00 = mq 62,00
TOTALE S.L.S. mq 83,87	

Volume	
mq 83,87 x m 3,15 = mc 264,19	
TOTALE VOLUME	mc 264,19

TIPOLOGIA 6 D

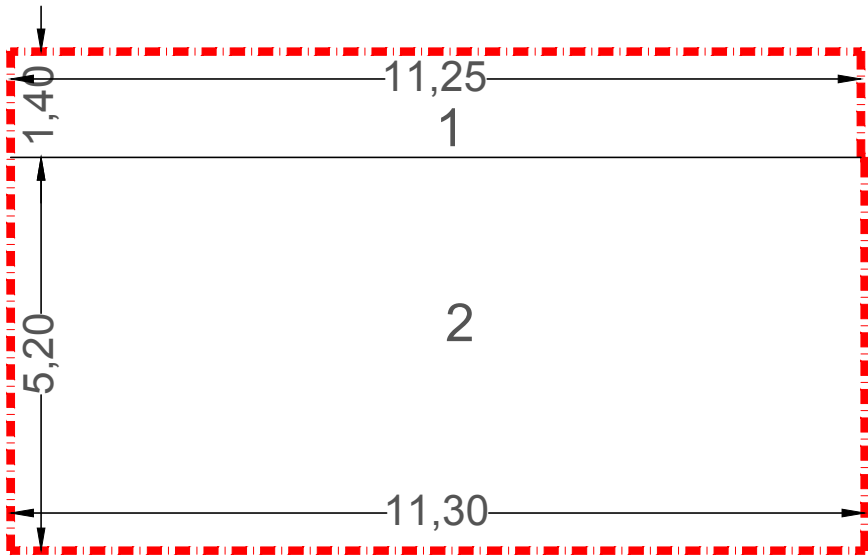
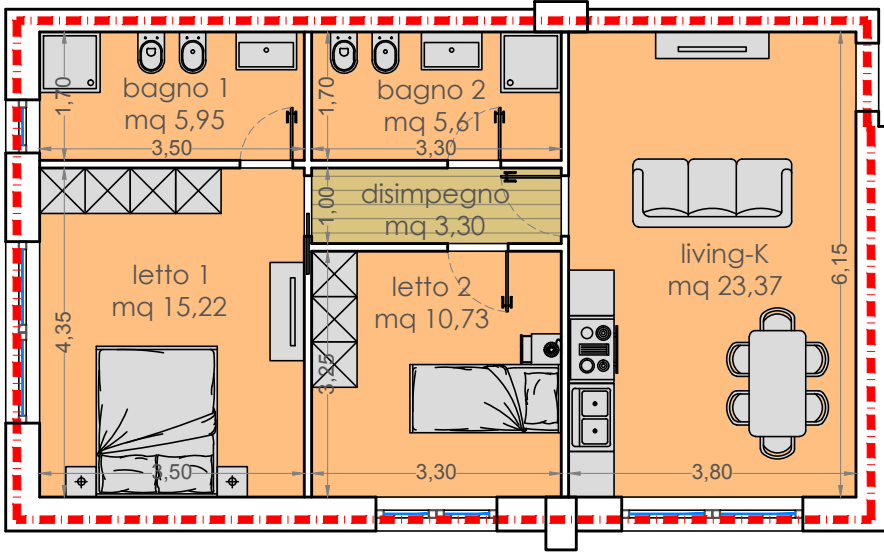


Superficie Utile	
Destinazione	mq
ufficio 1/attesa	20,01
ufficio 2	17,00
bagno	5,88
TOTALE S.U.	42,88

Superficie Lorda di Solaio	
1	m 8,20 x m 4,40 = mq 36,08
2	m 7,30 x m 1,85 = mq 13,51
TOTALE S.L.S.	mq 49,59

Volume	
mq 49,59 x m 3,15 = mc 156,21	
TOTALE VOLUME	mc 156,21

TIPOLOGIA 1 R

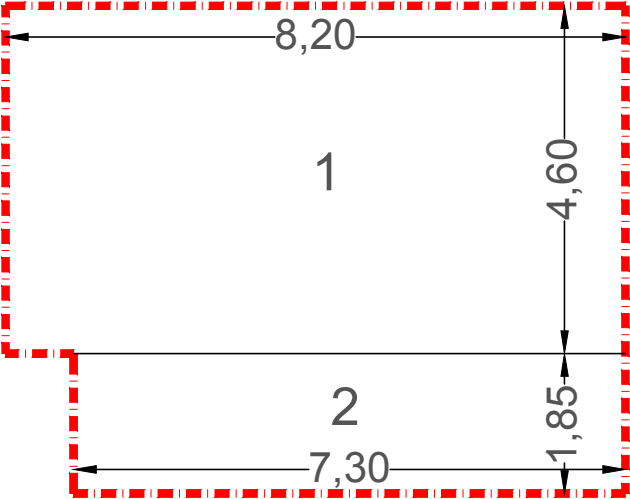
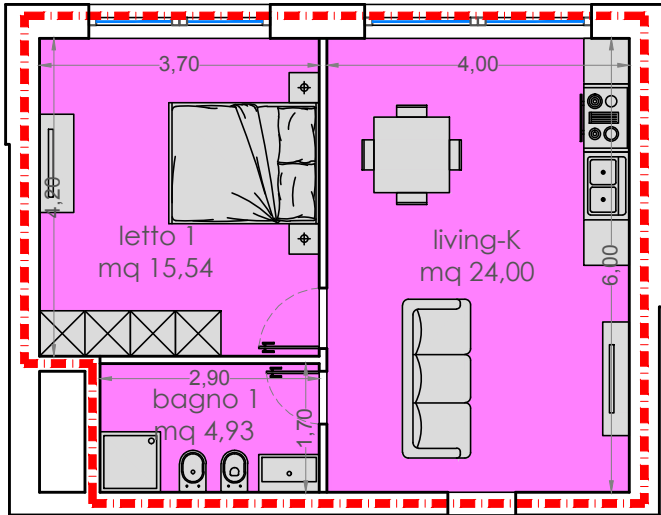


Superficie Utile	
Destinazione	mq
living - K	23,37
letto 1	15,22
letto 2	10,73
disimpegno	3,30
bagno 1	5,95
bagno 2	5,61
TOTALE S.U.	64,18

Superficie Lorda di Solaio	
1	m 11,25 x m 1,40= mq 15,75
2	m 11,30 x m 5,20 = mq 58,76
TOTALE S.L.S.	mq 74,51

Volume	
mq 74,51 x m 3,15 = mc 234,71	
TOTALE VOLUME	mc 234,71

TIPOLOGIA 2 R

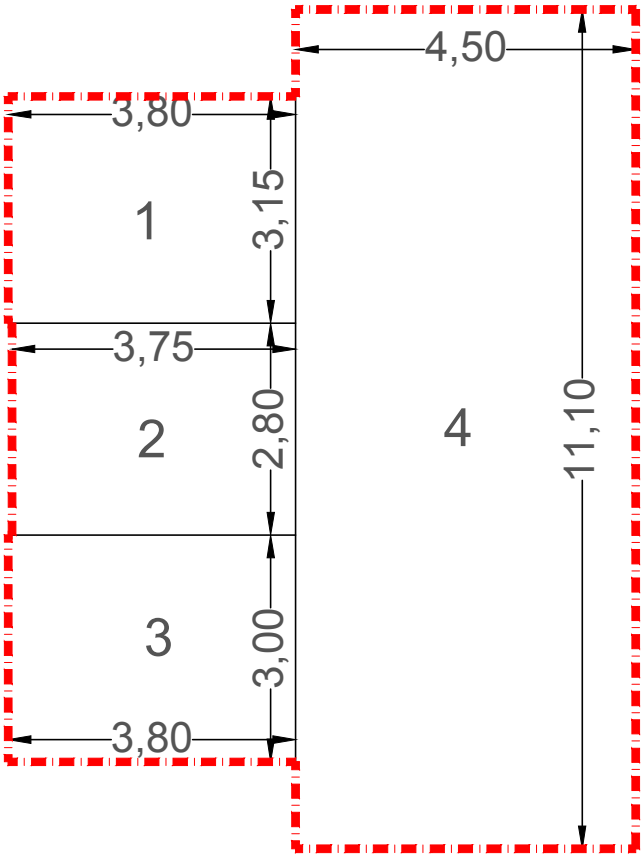
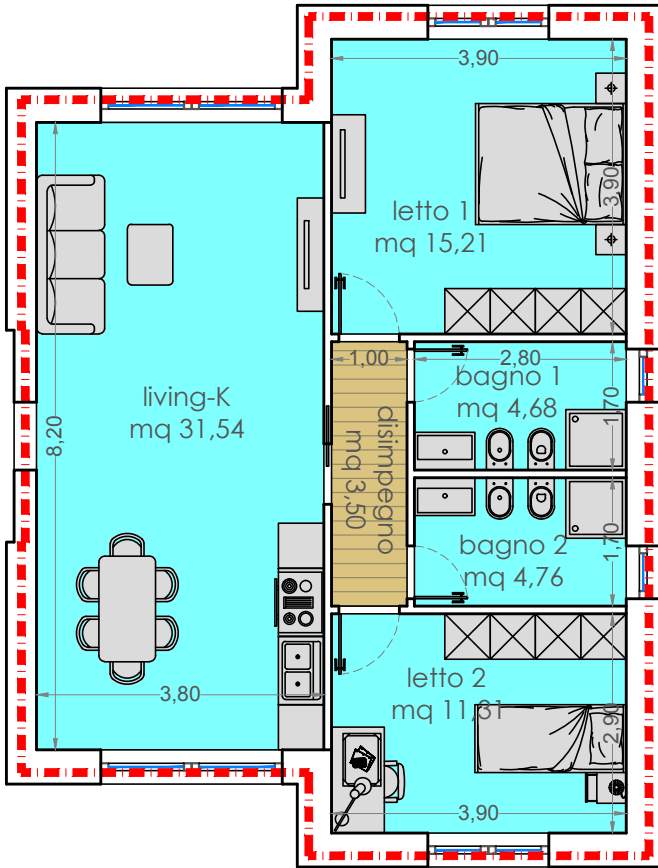


Superficie Utile	
Destinazione	mq
living - K	24,00
bagno 1	4,93
letto 1	15,54
TOTALE S.U.	44,47

Superficie Lorda di Solaio	
1	m 8,20 x m 4,60 = mq 37,72
2	m 7,30 x m 1,85= mq 13,51
TOTALE S.L.S. mq 51,23	

Volume	
mq 51,23 x m 3,15 = mc 161,37	
TOTALE VOLUME	mc 161,37

TIPOLOGIA 3 R



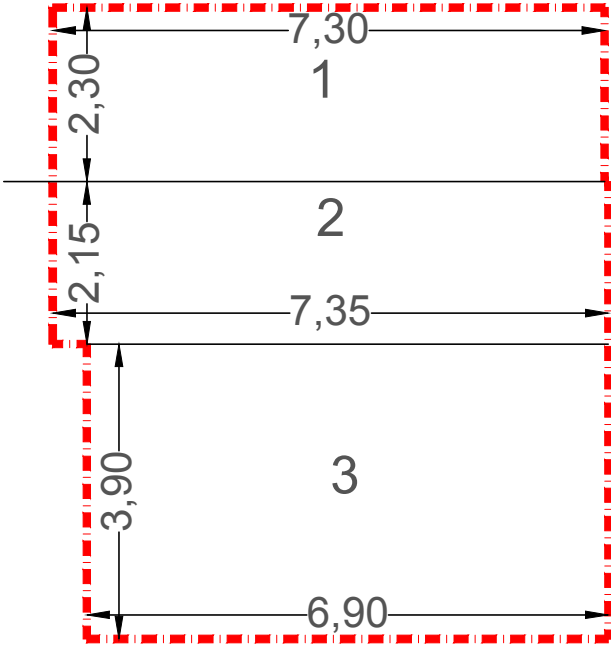
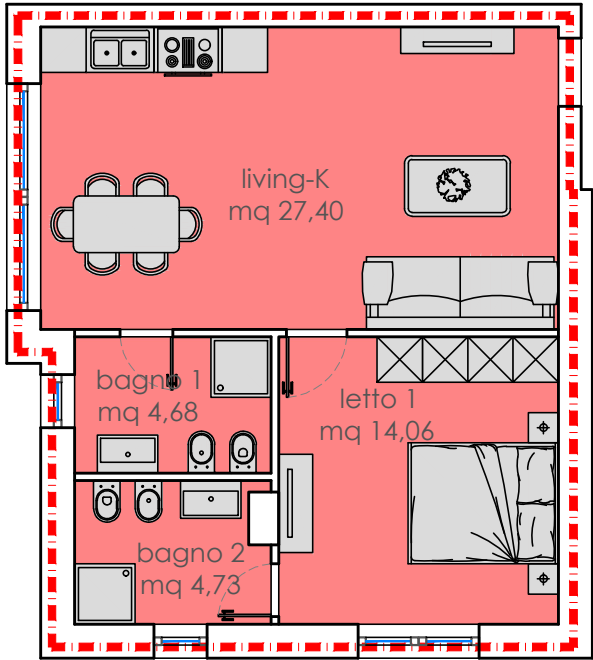
Superficie Utile	
Destinazione	mq
living - K	31,16
letto 1	15,21
letto 2	11,31
disimpegno	3,50
bagno 1	4,68
bagno 2	4,76
TOTALE S.U.	70,62

Superficie Lorda di Solaio	
1	m 3,80 x mq 3,15 = mq 11,99
2	m 3,75 x m 2,80 = mq 10,50
3	m 3,80 x m 3,00 = mq 11,40
4	m 11,10 x m 4,50 = mq 49,98
TOTALE S.L.S.	mq 83,87

Volume	
mq 83,87 x ml 3,15 = mc 264,19	
TOTALE VOLUME	mc 264,19



TIPOLOGIA 4 R

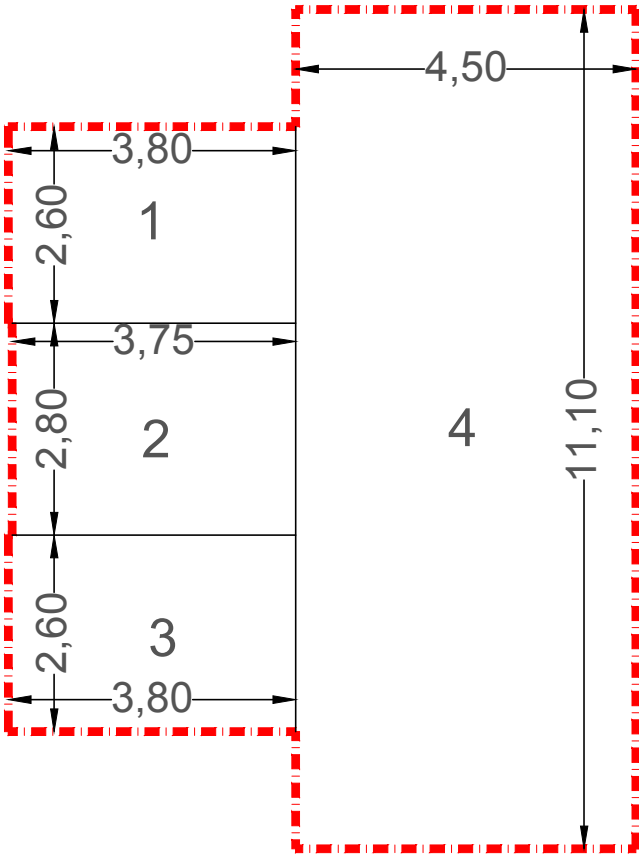
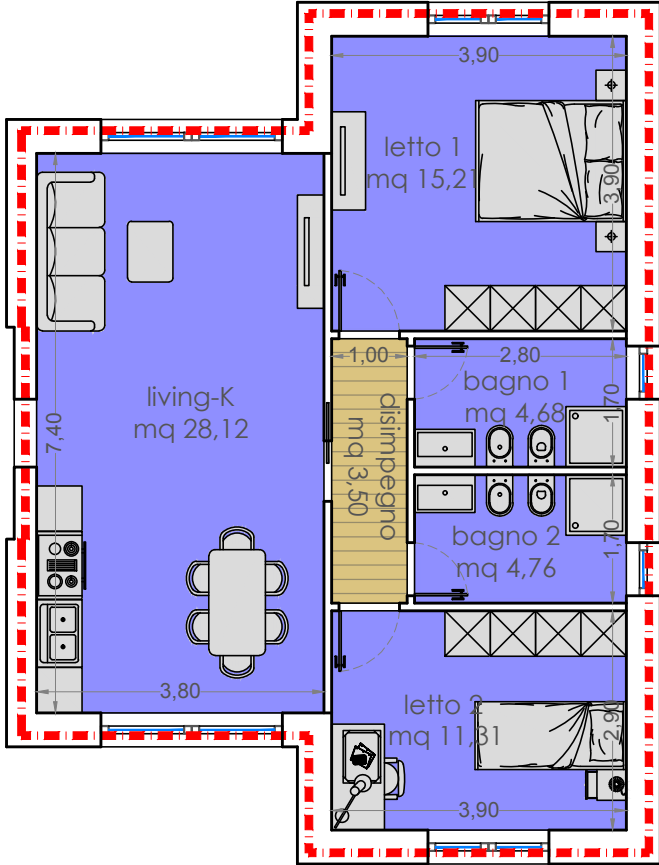


Superficie Utile	
Destinazione	mq
living - K	27,40
letto 1	14,06
bagno 1	4,68
bagno 2	4,73
TOTALE S.U.	50,87

Superficie Lorda di Solaio	
1	m 2,30 x m 7,30 = mq 16,79
2	m 2,15 x m 7,35 = mq 15,80
3	m 3,90 x m 6,90 = mq 26,91
TOTALE S.L.S.	mq 59,50

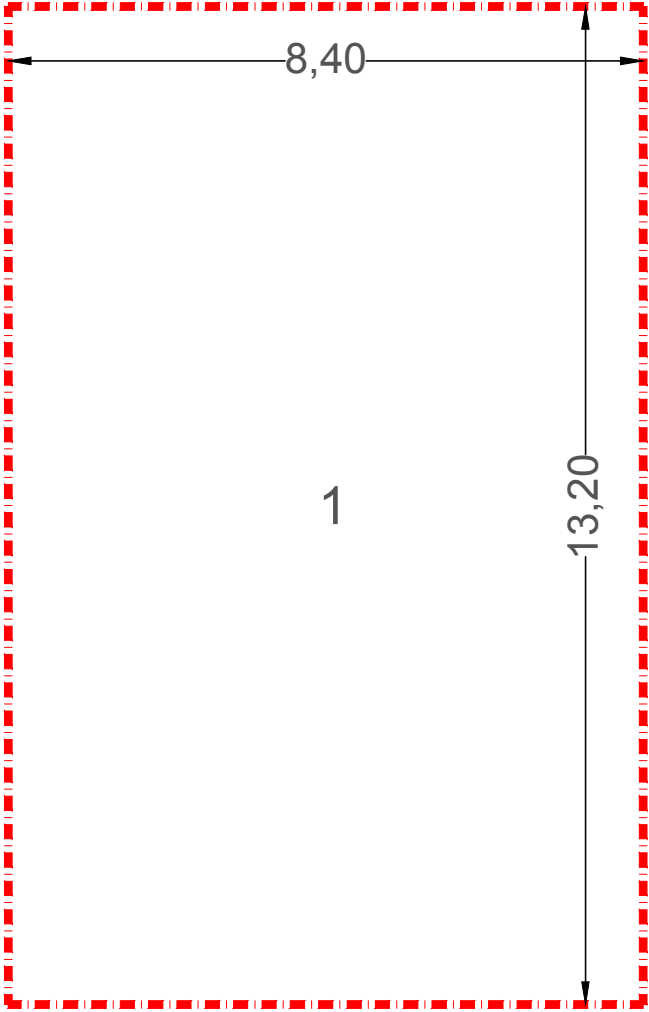
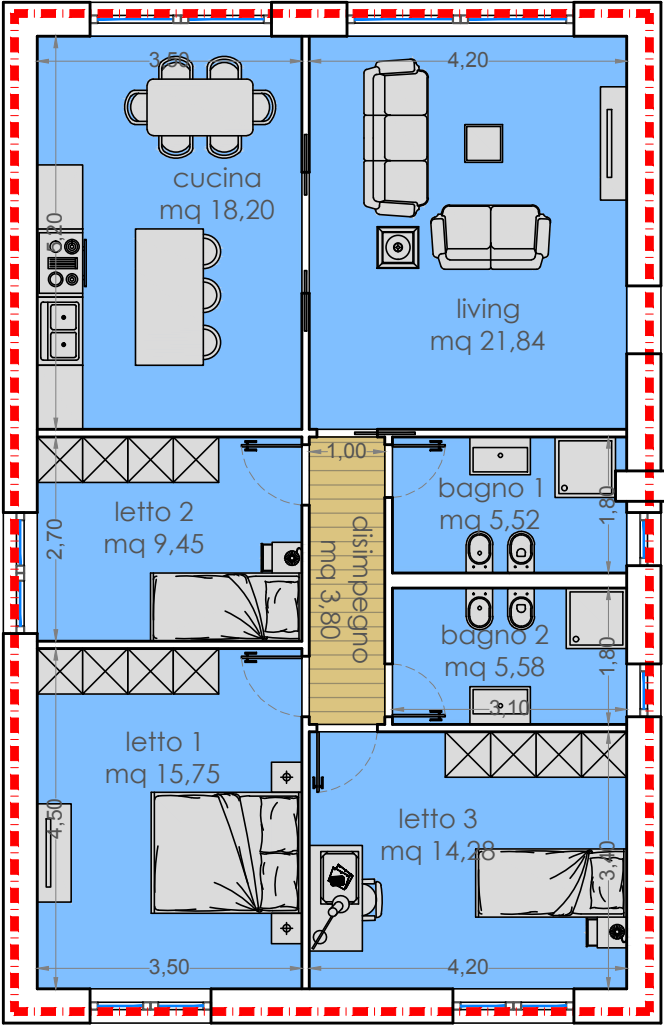
Volume	
mq 59,50 x m 3,15 = mc 187,43	
TOTALE VOLUME	mc 187,43

TIPOLOGIA 5 R



Superficie Utile	
Destinazione	mq
living - K	28,12
letto 1	15,21
letto 2	11,31
disimpegno	3,50
bagno 1	4,68
bagno 2	4,76
TOTALE S.U.	67,58
Superficie Lorda di Solaio	
1	m 3,80 x m 2,60 = mq 9,88
2	m 3,75 x m 2,80 = mq 10,50
3	m 3,80 x m 2,60 = mq 9,88
4	m 11,10 x m 4,50 = mq 49,95
TOTALE S.L.S.	mq 80,21
Volume	
mq 80,21 x m 3,15 = mc 252,66	
TOTALE VOLUME	mc 252,66

TIPOLOGIA 6 R

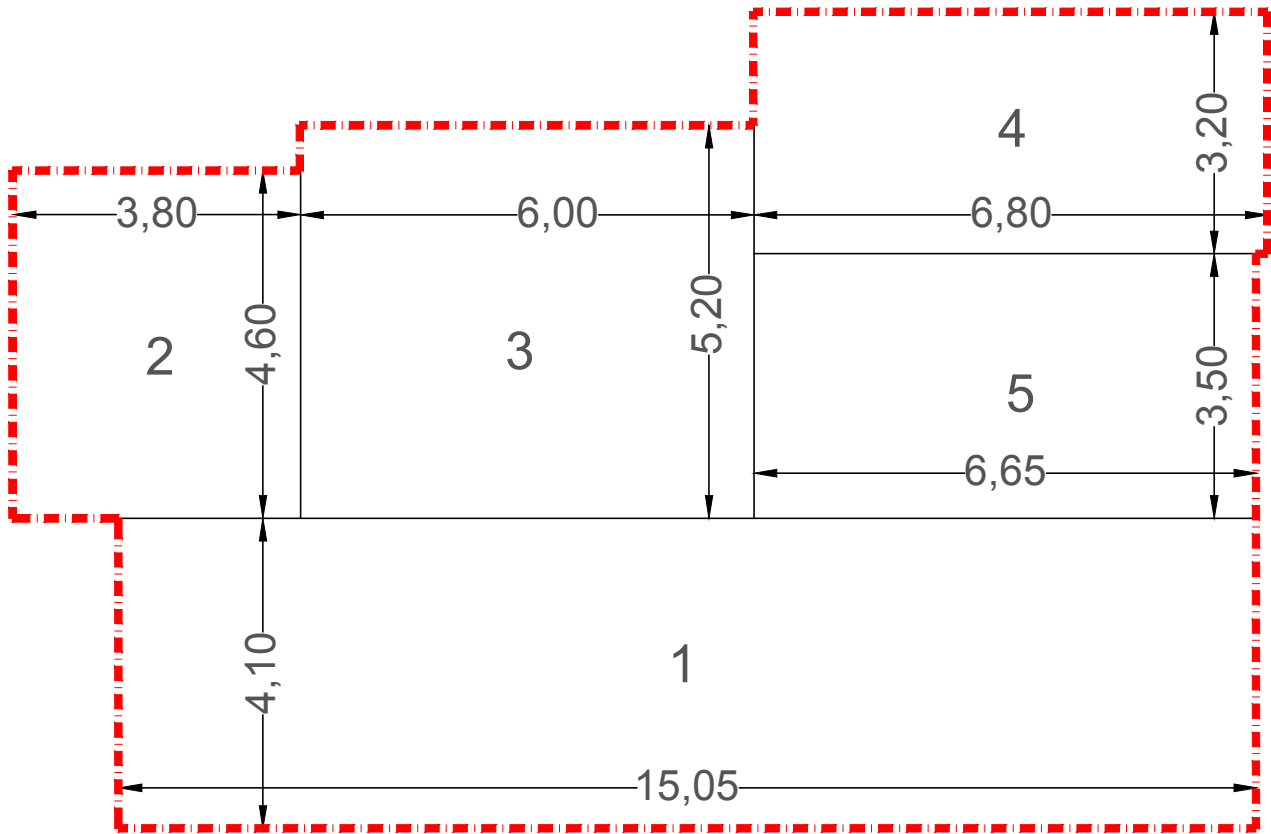
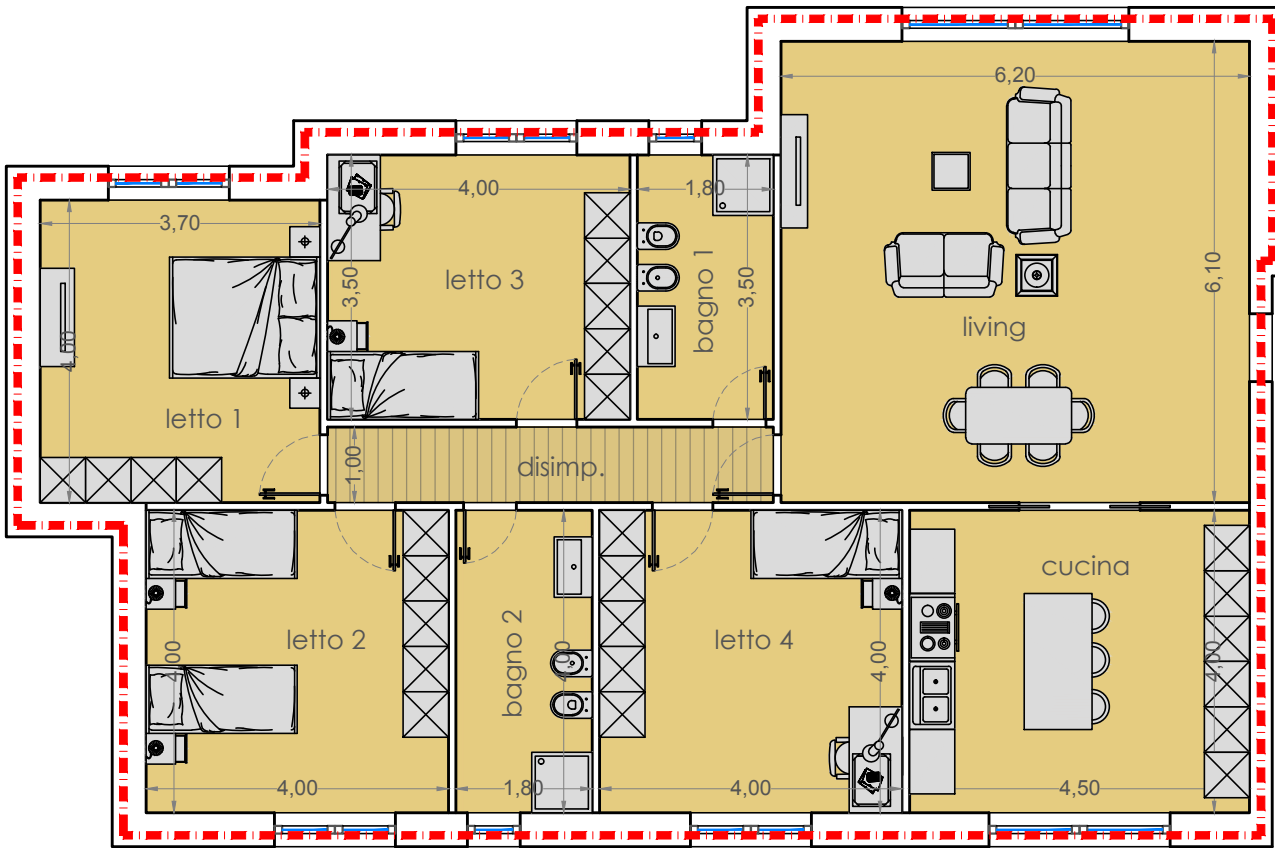


Superficie Utile	
Destinazione	mq
living	21,84
cucina	18,20
letto 1	15,75
letto 2	9,45
letto 3	14,28
disimpegno	3,80
bagno 1	5,52
bagno 2	5,58
TOTALE S.U.	94,42

Superficie Lorda di Solaio	
1	m 8,40 x m 13,20 = mq 110,88
TOTALE S.L.S.	mq 110,88

Volume	
mq 110,88 x m 3,15 = mc 349,27	
TOTALE VOLUME	mc 349,27

TIPOLOGIA 7 R

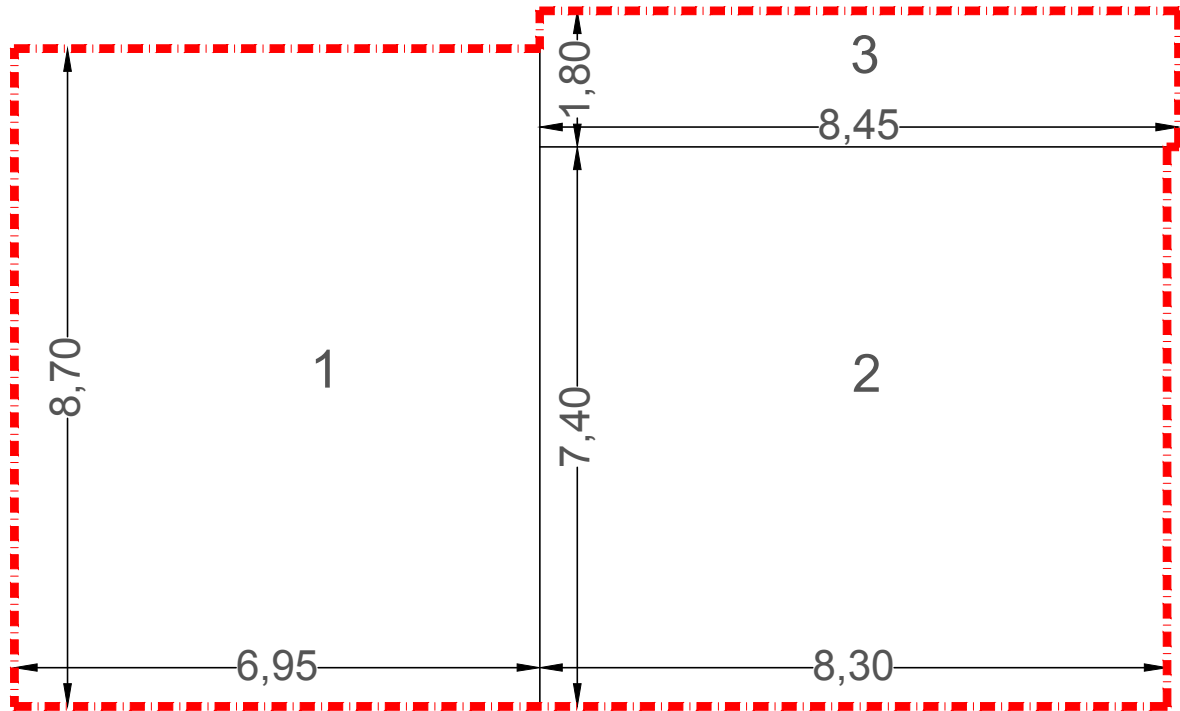
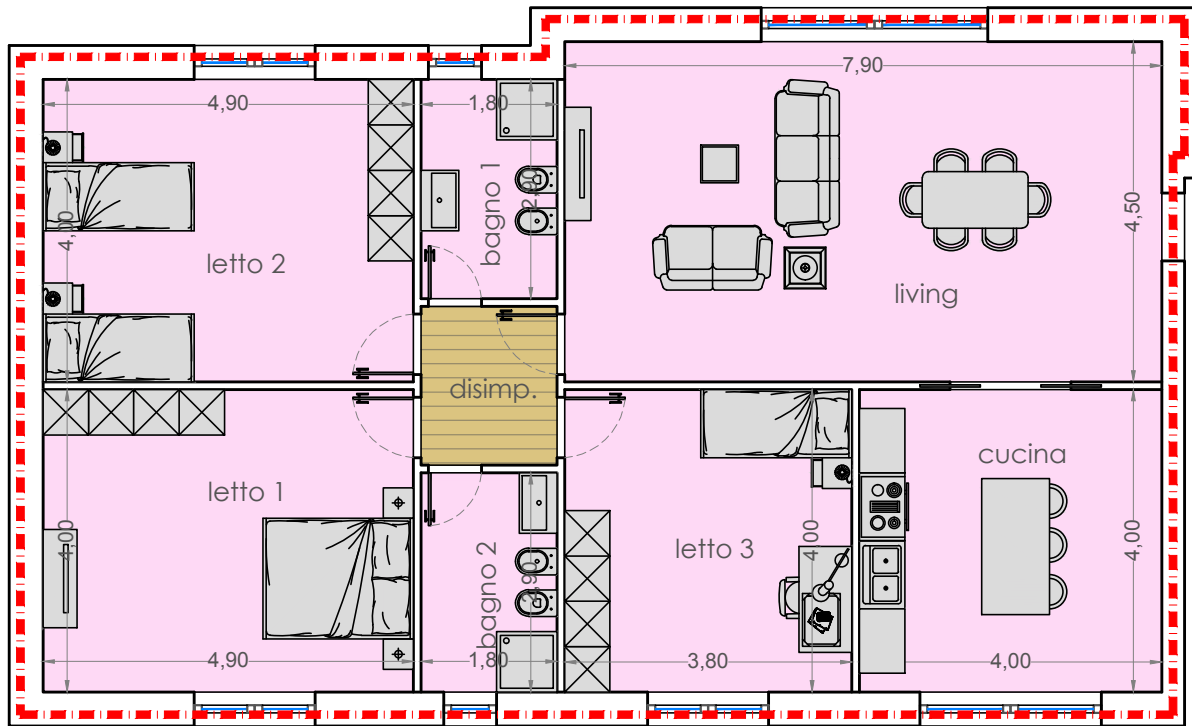


Superficie Utile	
Destinaz.	mq
living	37,82
cucina	18,00
letto 1	14,80
letto 2	16,00
letto 3	14,00
letto 4	16,00
disimp.	5,90
bagno 1	6,30
bagno 2	7,20
TOTALE S.U.	136,02

	Superficie Lorda di Solaio
1	m 15,05 x m 4,10 = mq 61,70
2	m 3,80 x m 4,60 = mq 17,48
3	m 6,00 x m 5,20 = mq 31,20
4	m 6,80 x m 3,20 = mq 21,76
5	m 6,65 x m 3,50 = mq 23,28
TOTALE S.L.S.	
mq 155,42	

Volume	
mq 155,42 x m 3,15 = mc 489,57	
TOTALE VOLUME	mc 489,57

TIPOLOGIA 8 R



Superficie Utile	
Destinazione	mq
living	35,55
cucina	16,00
letto 1	19,60
letto 2	19,60
letto 3	15,20
disimpegno	3,78
bagno 1	5,22
bagno 2	5,22
TOTALE S.U.	120,17

Superficie Lorda di Solaio	
1	m 8,70 x m 6,95 = mq 60,46
2	m 7,40 x m 8,30 = mq 61,42
3	m 1,80 x m 8,45 = mq 15,20
TOTALE S.L.S.	mq 137,08

Volume	
mq 137,08 x m 3,15 = mc 431,80	
TOTALE VOLUME	mc 431,80